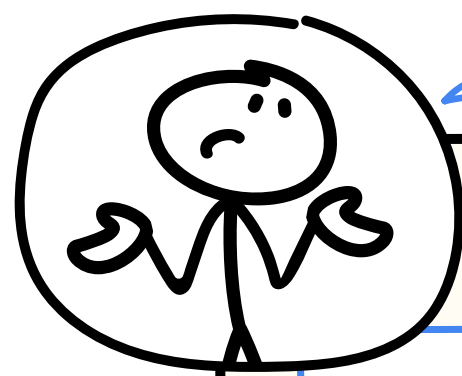




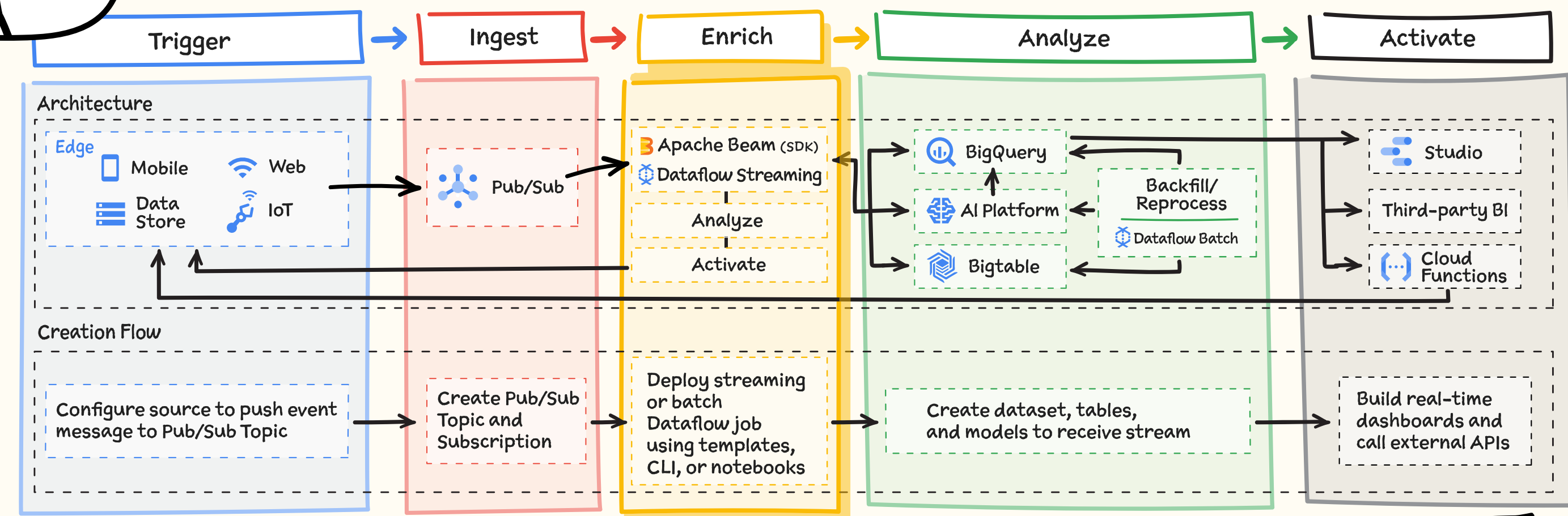
# Cloud Pub/Sub

#GCPSketchnote

@PVERGADIA THECLOUDGIRL.DEV 10.19.2020



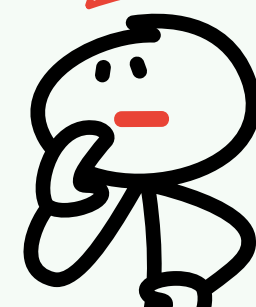
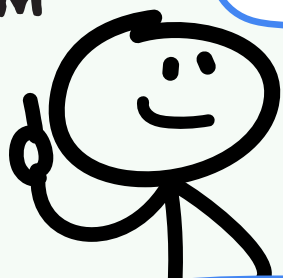
How does Pub/Sub help with Stream Analytics?



IT OPS SAM

"Event-driven architecture?" But our servers can't deal with the unpredictable traffic.

We have to make our systems real-time.



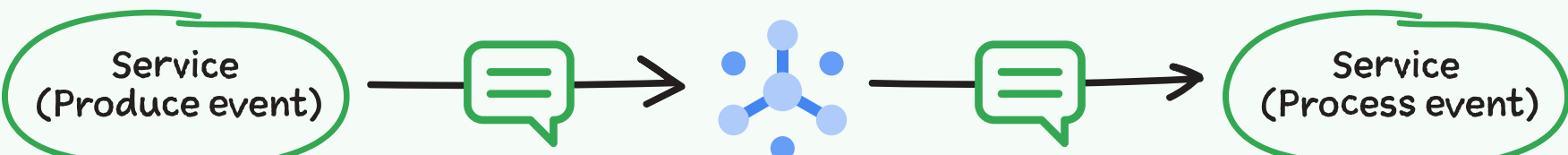
DEVELOPER ERIN



Pub/Sub!

What is Pub/Sub?

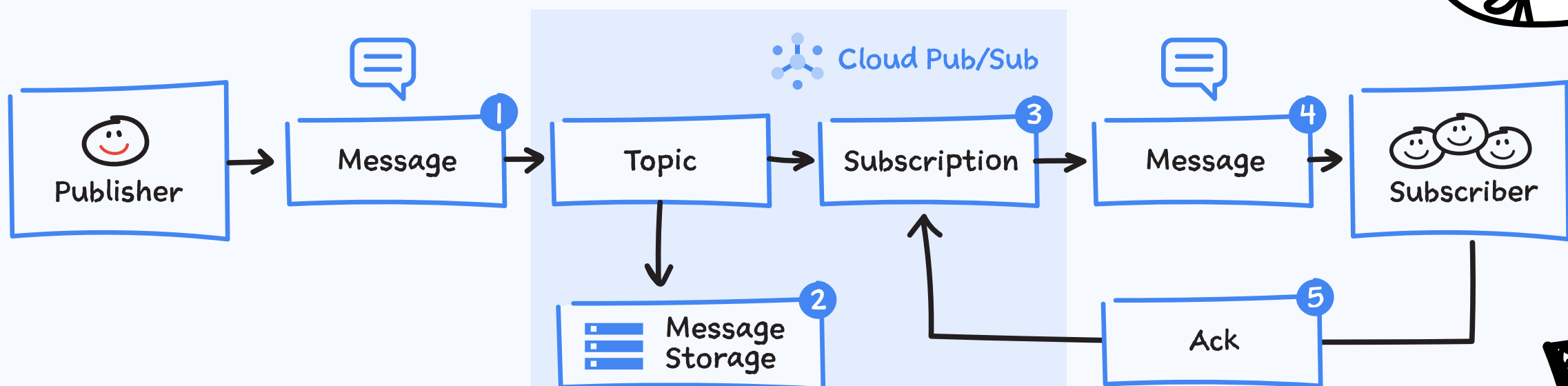
## EVENT DRIVEN ASYNCHRONOUS MESSAGING SERVICE



- In-order delivery at scale
- Exactly once processing
- Dead letter topics (Offline message inspection)
- At-least-once delivery (In conjunction with Dataflow)
- Filtering (Filter messages based on attributes)
- Seek & Replay (Ability to reprocess & discard messages)
- Pub/Sub Lite (Cost optimized delivery)

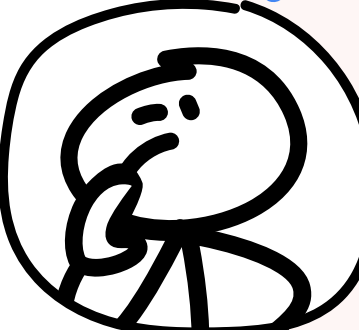
How does Pub/Sub work?

## PUB/SUB MESSAGE FLOW

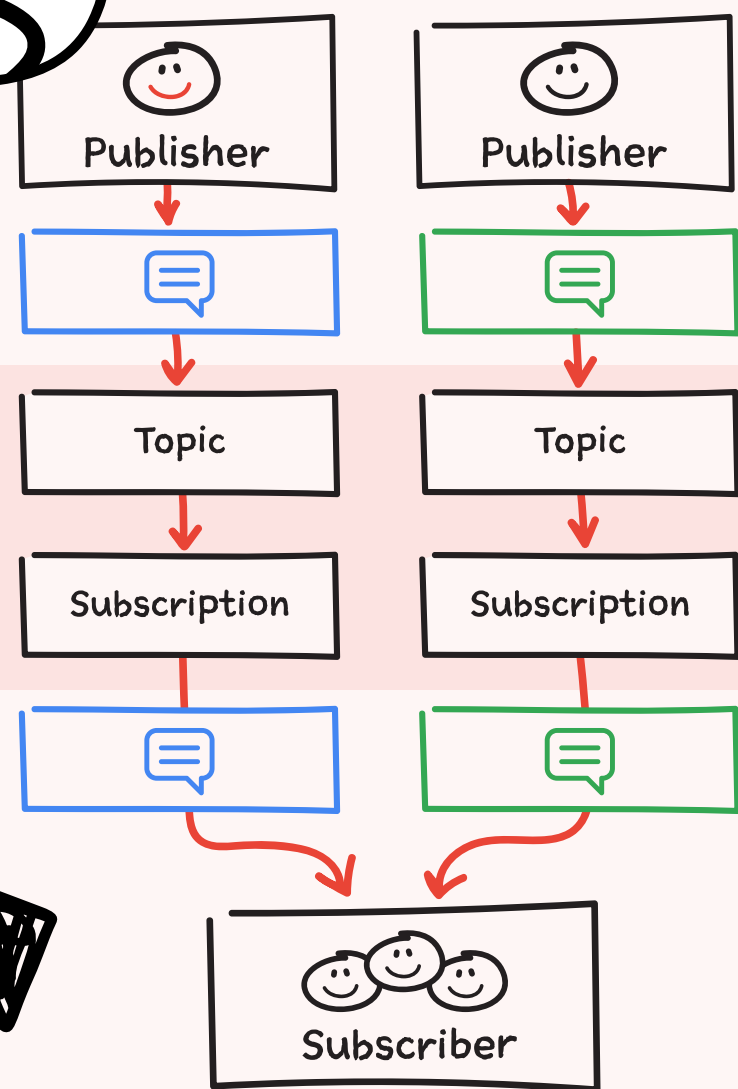


We just set up Topic & Subscription, Pub/Sub takes care of the rest!

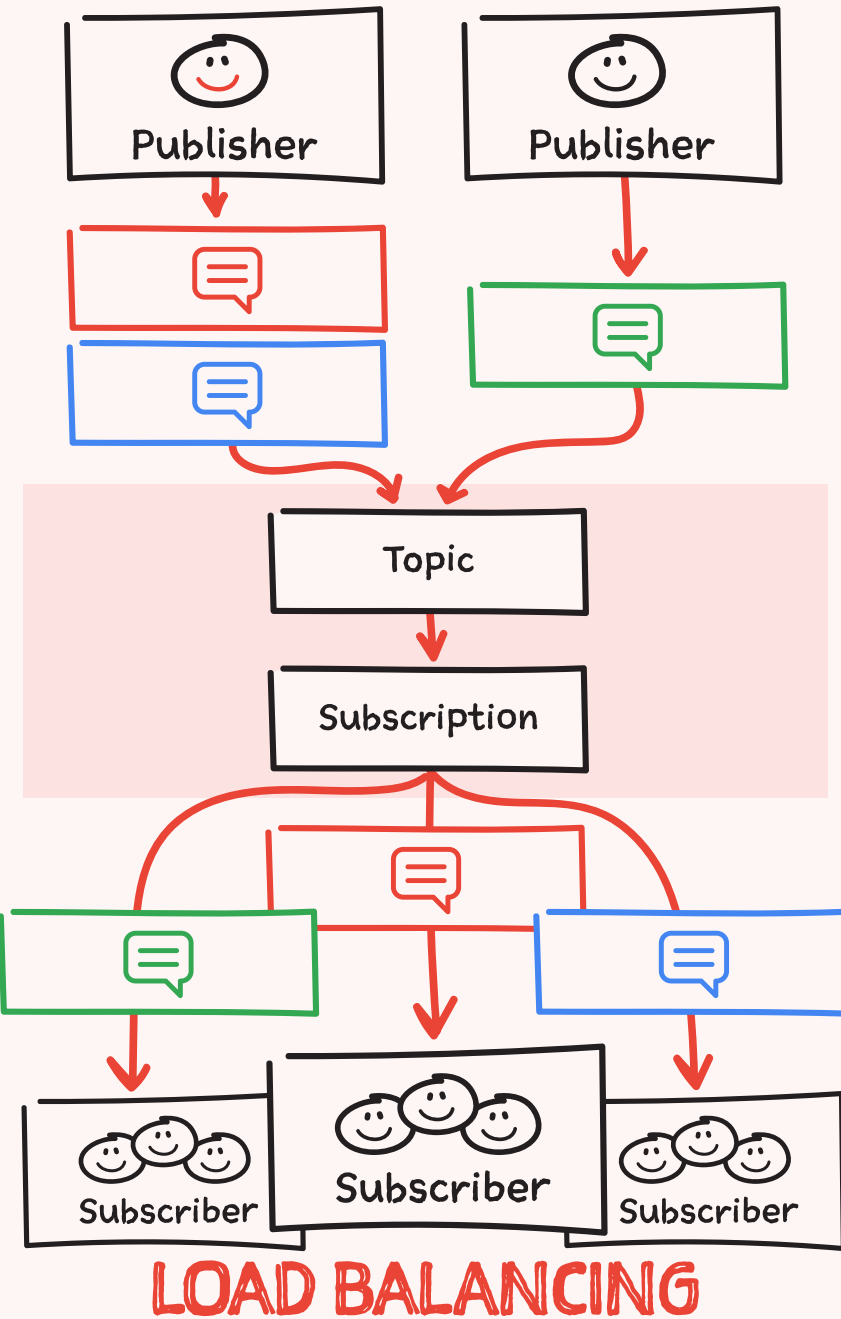
What are different Pub/Sub patterns?



### MANY-TO-ONE (FAN-IN)



### MANY-TO-MANY



### ONE-TO-MANY (FAN-OUT)

